



Photos: PACE and UWinnipeg students on campus—Cory Aronec



Our Programs

DIPLOMA	COST	START DATES	DURATION
Financial Management Diploma	\$18,500	January	12 Months
Human Resource Management	\$17,000	September & May*	12 Months
Marketing Management	\$16,500	January	13 Months
Network Security	\$20,000	September	14 Months
Project Management	\$17,000	September & May*	12 Months
Public Relations, Marketing & Strategic Communications	\$18,000	September	13 Months
Web Development Diploma	\$20,000	January	12 Months

All costs in Canadian dollars. *Programs starting in May will have a tuition increase of \$510

KEY APPLICATION DEADLINES

June 1 (Sept. programs) | October 1 (Jan. programs) | February 1 (May programs)

More Than an Education

PACE programs are packed with extras to provide a more comprehensive educational experience than many other schools!

At PACE, we understand that learning and life experiences go hand-in-hand! We work hard to make your time at PACE educational and fun, immersing you in the Canadian culture, while encouraging you to share your own culture.

PROFESSIONAL DEVELOPMENT

We have a number of professional building activities, such as Resumania, networking opportunities, industry speakers, a mentorship program and work experience.

PERSONAL GROWTH

Cultural events immerse you in Canadian culture while encouraging you to share your own culture. The Student Life Program offers many fun activities for students such as a Thanksgiving potluck, Halloween party, Holiday party, and Cultural Evening.

330+ ORGANIZATIONS PARTNERED WITH PACE TO PROVIDE GRADUATES MEANINGFUL CANADIAN WORK EXPERIENCE

GET THE EDGE WITH PACE

- Globally recognized
- Industry-aligned programs
- Professional association memberships
- Work experience
- Small class sizes
- Support staff
- Campus experience
- Industry-leading faculty



OVER 30% OF OUR INTERNATIONAL STUDENTS HAVE MASTER DEGREES PRIOR TO ENROLLING AT PACE.



THE AVERAGE AGE OF A PACE STUDENT IS BETWEEN 28-32

Life in Winnipeg

WHAT TO EXPECT

- Winnipeg is world renowned for blue skies, fresh air and easy access to nature.
- Winnipeg is one of the most affordable places to live in Canada.
- There are events for everyone year-round, and a very active and thriving arts and cultural community.
- National Geographic Best Trips list for 2016
- On any given weekend one can easily find something fun to do, from taking in our world-class Human Rights Museum (opened in 2014), to attending our world-famous Folk Festival (July).
- The average cost of rent in Winnipeg is about \$800/mthly for a one-bedroom apartment off-campus. There is also on-campus housing, which is about \$500/mthly for a studio.
- Getting around Winnipeg is very easy, with an expansive transit service or if you prefer to drive – there is ample parking.
- Manitoba has so much to offer. If you are adventurous and wish to ‘road-trip’ around Manitoba you can drive to pristine forests, foothill mountains, beautiful lakes, sandy beaches and even a desert within a few hours’ drive from the city.
- Bringing your family? Winnipeg is a wonderful, safe, and multi-cultural environment in which to raise children. Spouses can work, daycare costs are provincially subsidized, and you will have access to Canada Universal Health Care for free.
- Winnipeg has a population of 700,000 and the top three ethnic groups in Winnipeg are Filipino, Indian, and Chinese.*

WORKING IN WINNIPEG

- International students can work if they hold a valid study permit. That includes on and off campus opportunities. There are also opportunities to stay and work in Winnipeg or Canada after graduation. Visit www.cic.gc.ca for more information.
- For more information on the Manitoba Provincial Nominee Program (PNP) visit www.immigratemanitoba.com.

* Statistics Canada - 2013 ** The Conference Board of Canada – 2012

HEART OF CANADA

Winnipeg is located in the heart of Canada and is known for its vibrant artistic and festival scene. With more than half of Manitoba's population, Winnipeg is home to ethnic groups from all over the globe—more than 100 languages are spoken. Here you can experience all four distinct seasons while exploring all that the Manitoba outdoors have to offer: scenic lakes and rivers, vast landscapes, and wildlife.



WINNIPEG TRANSIT HAS 56 BUS ROUTES AROUND THE VICINITY OF THE CAMPUS, AND 21 THAT COME DIRECTLY TO IT

JOBS



OUTSTANDING GRADUATES WERE ABLE TO LAND JOBS IN CANADA WITH SALARIES STARTING AS HIGH AS \$60,000/YR.

AFTER GRADUATION

Students who complete a program at PACE are eligible for a work permit, which offers the opportunity to work in Canada after graduation.

The Manitoba Tuition Fee Income Tax Rebate

Graduates who stay and work in Manitoba are eligible for an income tax rebate of up to 60% of eligible tuition fees. For example, a graduate of a \$20,000 program would receive a \$12,000 refund!

gov.mb.ca/tuition

Immigrate to Canada

The Manitoba Provincial Nominee Program offers the opportunity for international student graduates to apply for permanent residence status in Canada.

immigratemanitoba.com

AVERAGE SEASONAL TEMPERATURES

SPRING
LOW +2 / HIGH +12

SUMMER
LOW +15 / HIGH +24

AUTUMN
LOW +1 / HIGH +10

WINTER
LOW -20 / HIGH -10

Photos: (from top to bottom)
UWinnipeg student on campus—Cory Aronec
UWinnipeg student on campus—Cory Aronec
Lake fishing—Kate Loewen
Polar bear, Journey to Churchill Exhibit—Assiniboine Park Zoo



Change Your Life



ETHAN NGUYEN, VIETNAM

Managerial and Financial Leadership Diploma, Class of 2015
Finance Coordinator, Loblaws

Finding a job in Winnipeg without any Canadian work experience or education would be a challenge. But the education I had when I entered the workplace allowed me to find a job right away.



PRISCILLA RIOS RODA RAZUK, BRAZIL

Public Relations, Marketing & Strategic Communication Diploma, Class of 2015
Marketing Coordinator, Aramark

I got a job in my area of study three weeks before I finished the program. PACE was a perfect fit due to its length and its high quality of education. When I signed up for the program I knew I would return to the market quickly.



IDAYAT OGUNGBADE, NIGERIA

Human Resource Management Diploma, Class of 2015
Human Resource Analyst, Artis REIT

What I liked about PACE is the well-rounded curriculum. The program covers all aspects of human resource management and key areas of management. It used the most current ideas on all aspects of human resource management, with a knowledgeable faculty.



JORGE MOLINA, DOMINICAN REPUBLIC

Project Management Diploma, Class of 2016

During my time at PACE, I have met many interesting people that come from diverse professional backgrounds, and cultures; they have enriched the learning process with knowledge they bring from their careers, and professional experience.



CAMILA JERGER, BRAZIL

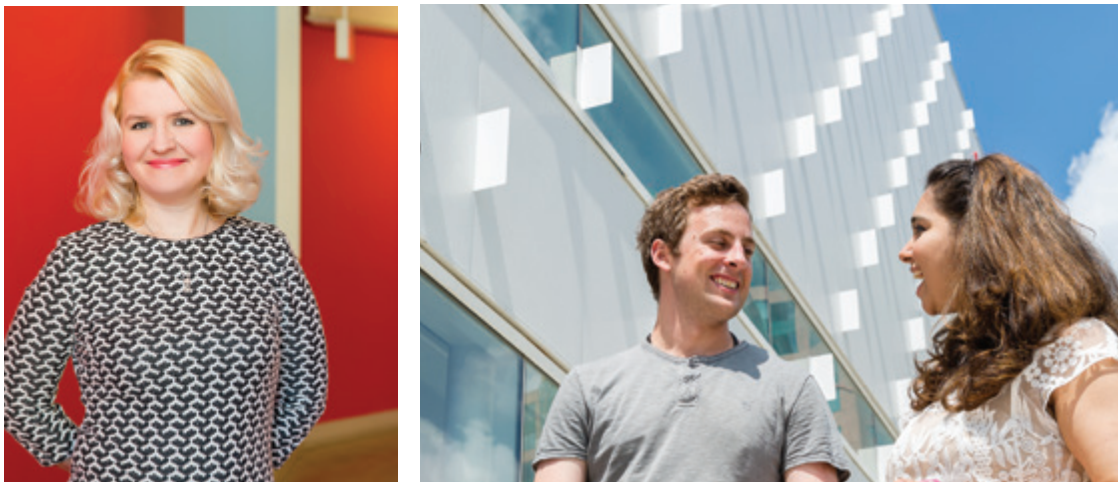
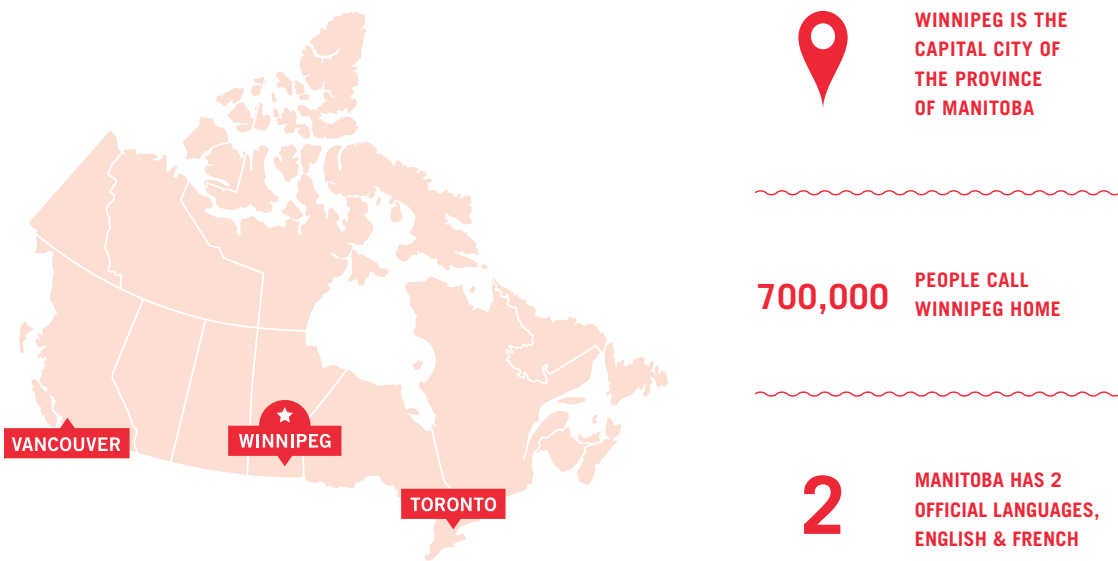
Project Management Diploma, Class of 2016

I was part of a great mix of students, a diverse and fun class that provided me countless opportunities to further develop my communication skills and to work in multicultural teams – skills I am already applying at my job at a fast-growing technology company headquartered in Winnipeg.

TO APPLY VISIT OUR WEBSITE: pace.uwinnipegcourses.ca/international-students

** The Conference Board of Canada – 2014

Map of Canada



Photos: PACE and UWinnipeg students on campus—Cory Aronec

Tuition & Fees

TUITION	\$17,000–20,000
UNIVERSITY HEALTH INSURANCE	\$325
BOOKS AND SUPPLIES	\$1,500–2,000
UW STUDENT ASSOC. FEE	\$100
TOTAL	\$18,925 - 22,425

* Based on tuition fees for 2016-2017.
* Fees vary depending on program and any additional courses not included in the program schedule.
* All costs in Canadian dollars

TUITION FEES INCLUDE

- Your program (no extra fees)
- Internship for those eligible
- Student life & cultural events
- Professional events
- Personal academic advising/counseling
- Software*
- Professional memberships*
- Airport reception (if requested)
- Use of most UWinnipeg facilities and services
- Membership in the University of Winnipeg student association

* Applicable programs

FUNDING YOUR EDUCATION

The University of Winnipeg President's Scholarship for World Leaders may be awarded to an international student entering any of the University's divisions for the first time. (Application required)

uwinnipeg.ca/awards-international

Cost of Living

Living in Winnipeg is very affordable compared to other major cities.

EXPENSE	ON-CAMPUS	OFF-CAMPUS
Housing	\$500 monthly	\$800 monthly
Food	\$300 monthly	\$300 monthly
Personal	\$600 monthly	\$600 monthly
Total	\$1400 monthly	\$1700 monthly

Pricing is based upon a single dorm or a one bedroom apartment.

34 NATIONALITIES CURRENTLY LIVE IN RESIDENCE

RESIDENCE IS A GREAT WAY TO MAKE NEW FRIENDS FROM AROUND THE WORLD

Based on expenses for a single person, which may fluctuate based on lifestyle choices. All costs in Canadian dollars.

How We Are Different

PACE offers professional and applied post-degree level programs. We serve those who wish to focus their education on specialized career fields in high growth employment sectors. Our graduates enjoy a high employment rate and identify the comprehensive nature of PACE full-time programs as a key factor to their success.

THE PACE ADVANTAGE

The PACE competitive advantage results from our high academic standards, incredible team of instructors, and industry-aligned curriculum. This prepares PACE graduates for employment, and is evident as they continually outperform others on accreditation exams. Finally, similar programs in other parts of Canada span over two years with fewer courses, while PACE graduates are job ready in one year or less.

EXAMPLE 1

PROGRAM
OF COURSES
WORK EXPERIENCE
JOB SEARCH TECHNIQUES
TUITION FEES
DUAL CREDENTIALS

PACE	COMPETITOR
PROJECT MANAGEMENT	PROJECT MANAGEMENT
28	11
INCLUDED (NO ADDITIONAL COST)	ADDITIONAL COST
INCLUDED	NOT AVAILABLE
\$17,000	\$17,900
PROJECT MANAGEMENT DIPLOMA AND A MANAGEMENT CERTIFICATE	

EXAMPLE 2

PROGRAM
OF COURSES
WORK EXPERIENCE
JOB SEARCH TECHNIQUES
TUITION FEES
DUAL CREDENTIALS

PACE	COMPETITOR
HUMAN RESOURCE MANAGEMENT	HUMAN RESOURCE MANAGEMENT
25	12
INCLUDED (NO ADDITIONAL COST)	ADDITIONAL COST
INCLUDED	NOT AVAILABLE
\$17,000	\$17,220
HUMAN RESOURCE DIPLOMA, MANAGEMENT CERTIFICATE, AND A WHMIS CERTIFICATE	

OUR INSTRUCTORS



Ab Freig, M.Sc.
Business Coach



Charles J Meltzer PhD
President, SyntecGroup



Chrystal Robert-Macey,
BEd, Principal,
The Sponsorship
Experience



Samantha Lapedus, BA
Principle at Lapedus
Communications



Stephen Hayes, MA
Instructor and Public
Speaker



THE UNIVERSITY OF
WINNIPEG

CONTACT

Phone: 1+ 204.982.6633
Email: paceft@uwinnipeg.ca
Web: pace.uwinnipeg.ca
Apply: applytopace@uwinnipeg.ca

SOCIAL MEDIA

f facebook.com/UWinnipegPACE
t twitter.com/uwinnipegPACE
i instagram.com/uwinnipegpace



Professional, Applied and
Continuing Education

2016–2017

